

141 Cherry Hill Dr
Belton, MO 64012
816-318-1131 phone
816-318-1158 fax

RSP Limited, Inc.

PSC Magellan 8100 & 8200 Programming Guide



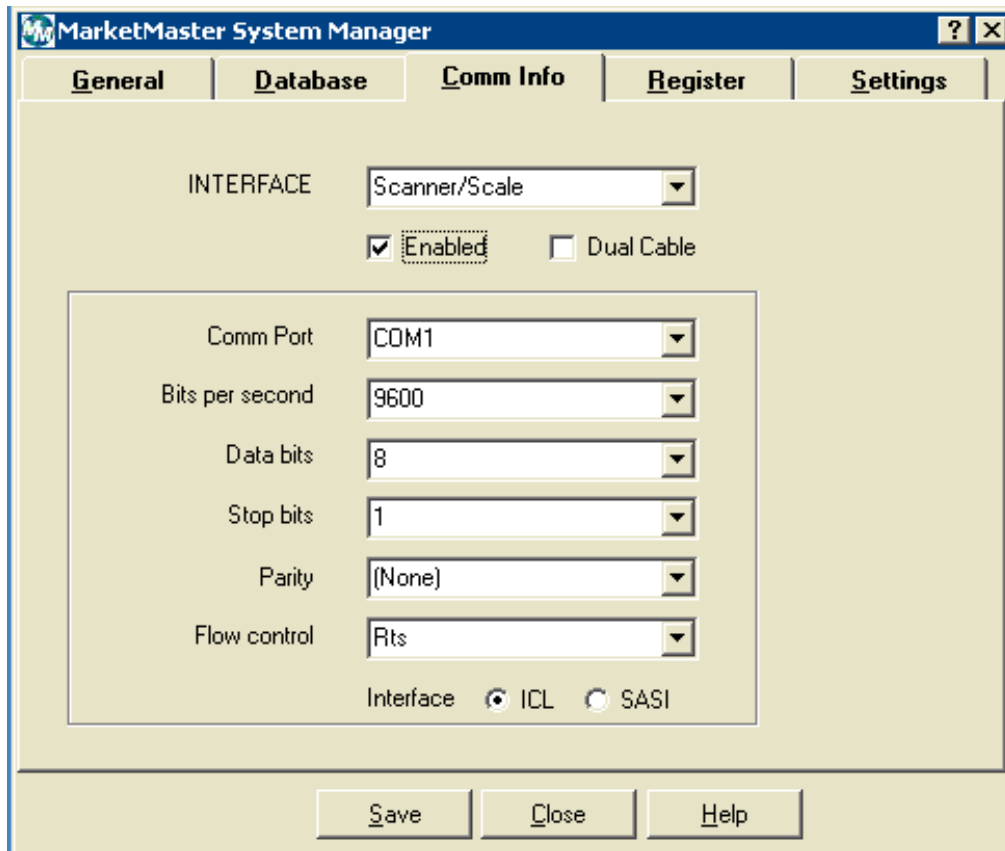
Disclaimer

Please read the following conditions of use carefully before using this document. All users of this document agree that access and use of this document are subject to the following conditions.

The information contained in this document is current from the MarketMaster™ version 6.7 released with this CD and is subject to change without notice. Any updates and changes to this document will be available on the RSP Limited, Inc. FTP site: <ftp.msimm.com>. Access to these updates and changes on the FTP site require a password. Passwords are available only to current Customers and Dealers of RSP Limited, Inc. If you are a current customer and a password has not been issued to you please call our office to obtain your password. Please refer to the FTP site if you need to check the accuracy of your current version documentation of MarketMaster™ Suite of products.

Any reference use of material(s) in this document in whole or part is an adoption, acknowledgement, and acceptance of this Disclaimer in full.

1. Setup the PSC Magellan Scanner/Scale **making sure that the pole weight display is plugged in.** (If the pole weight display is not plugged in you will get an Error 8 on the scanner and it will beep).
2. Power on the scanner/scale, program the scale according to the following steps.
 - a. If the LED screen inside reads 0 scan the **RS-232: Single Cable** barcode
 - b. Scan **“SWITCH LABEL”**
 - c. Scan **“RETURN TO FACTORY DEFAULTS”**
 - d. Scan **“SCALE COUNTRY MODE = U.S.A”**
 - e. Scan **“SCALE ENFORCED ZERO RETURN = SCALE MUST RETURN TO ZERO WEIHG T BETWEEN WEIGHT REQUESTS”**
 - f. Scan **“SCALE MOTION LEVEL FILTER = LOW”**
 - g. Scan **“REMOTE DISPLAY = DISABLE”**
 - h. Scan **“EAN-13 CHECK CHARACTER TRANSMISSION = ENABLE”**
 - i. Scan **“SWITCH LABEL”**
3. Unplug the pole weight display from the scanner/scale. Recycle power on the scanner/scale.
4. Now setup the scanner/scale in Checkout Standard Setup via Start → Programs → Market Master → Checkout Standard → Checkout Standard Setup.
5. Setup the Comm Port Settings for the scanner/scale as shown below. (Your Comm Port will vary according to your setup.)



RS-232 Single Cable Interface Selection

Remember to cover any unused bar codes on this and the facing page to ensure that the scanner reads only the bar code you intend to scan.



INTERFACE TYPE = RS-232 SINGLE CABLE

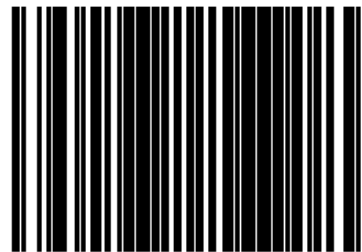
What Is Programming Mode?

Programming Mode is a state in which the scanner must be placed in order to accept commands via programming bar code labels. When programming using the bar code labels in this manual, the scanner is typically placed in Programming Mode by scanning the SWITCH label.

While in the Programming Mode, the scanner only recognizes the special programming bar codes contained in this programming guide. See *Appendix A* for information about scanner indications while in the Programming Mode.

Entering and Exiting Programming Mode.

Use the bar code label below to enter and exit (“switch” into and out of) Programming Mode.



SWITCH LABEL

LED and Beeper Indicators

The scanner provides a set of indicators that verify/announce the various scanner functions.

If You Make a Mistake...

If, during a programming session, you find that you are unsure of the scanner's settings or wish to reset the scanner's configuration, use the Return to Factory Settings label below to return the scanner's configuration to the factory settings. Scanning this label will also reset any changes made during previous programming sessions.

Return to Factory Settings

Scan this bar code to return the scanner to the default settings configured at the factory for the currently active interface. This bar code is typically used to return the scanner to a "known" operating state when the present programming status is not known, faulty, or suspect.



CAUTION

Use this bar code with caution, since it will reset ALL features that may have been programmed since the scanner's installation.



NOTE

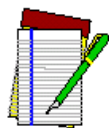
DO NOT scan the SWITCH bar code before and after scanning this bar code.



RETURN TO FACTORY SETTINGS

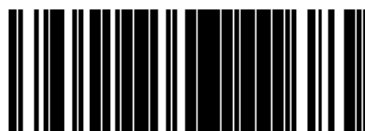
Scale Country Mode

When a weight is presented, the scanner/scale will apply the country-specific weighing rules specified via this feature.



NOTE

Scale Country Mode applies only when a scale is enabled.
RS-232 SASI scale interface supports only U.S.A. mode.



SCALE COUNTRY MODE = U.S.A.

Scale Enforced Zero Return

This feature enables/disables the enforced zero return of the scale. Three settings are available for this feature:

- Disable
- Scale Must Return to Zero Weight Within Four Minutes — Scale will require re-zeroing if a non-zero weight is left on for more than 4 minutes
- Scale Must Return to Zero Weight Between Weight Requests — Re-zeroing required if weight doesn't return to zero between weight requests from the POS, plus scale will require re-zeroing if a non-zero weight is left on for more than 4 minutes.

To set this feature:

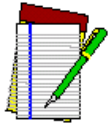
1. Scan the SWITCH bar code.
2. Scan your selection from the bar codes below. You'll need to cover any unused bar codes on this and the facing page to ensure that the scanner reads only the bar code you intend to scan. The strategy is to select the lowest possible filter level needed that allows normal scale operation.
3. Complete the programming sequence by scanning the SWITCH bar code.



SCALE ENFORCED ZERO RETURN = SCALE MUST RETURN TO ZERO WEIGHT
BETWEEN WEIGHT REQUESTS

Scale Motion Level Filter

In environments where checkstands generate excessive vibration, the scale can be set to filter a certain amount of the motion with regard to its operation.



NOTE

This filter is generally used only in applications where scale error E_1 (too much motion at power-up) has occurred.

To set this feature:

1. Scan the SWITCH bar code.
2. Scan your selection from the bar codes below. You'll need to cover any unused bar codes on this and the facing page to ensure that the scanner reads only the bar code you intend to scan. The strategy is to select the lowest possible filter level needed that allows normal scale operation.
3. Complete the programming sequence by scanning the SWITCH bar code.



SCALE MOTION LEVEL FILTER = LOW

Remote Display – Enable/Disable

The scanner-scale can be configured to operate with or without a Remote Display.



NOTE

Recalibration/recertification may be required when adding a Remote Display. Consult your local Weights and Measures authority.

If this feature is enabled the scanner-scale will expect that it is connected to a Remote Display, and will indicate an error if one is not. See *Error Codes* in Section 4 for more information.



REMOTE DISPLAY = DISABLE

EAN-13 Check Character Transmission

Enables/disables transmission of an EAN/JAN-13 check character.



NOTE

This item is ignored when the advanced feature, Full Label Edit, is enabled.

To set this feature:

1. Scan the SWITCH bar code.
2. Scan either the enable or disable bar code below. You'll need to cover any unused bar codes on this and the facing page to ensure that the scanner reads only the bar code you intend to scan.
3. Complete the programming sequence by scanning the SWITCH bar code.



EAN-13 CHECK CHARACTER TRANSMISSION = ENABLE

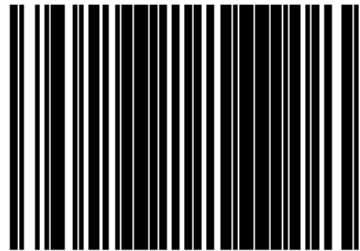
What Is Programming Mode?

Programming Mode is a state in which the scanner must be placed in order to accept commands via programming bar code labels. When programming using the bar code labels in this manual, the scanner is typically placed in Programming Mode by scanning the SWITCH label.

While in the Programming Mode, the scanner only recognizes the special programming bar codes contained in this programming guide. See *Appendix A* for information about scanner indications while in the Programming Mode.

Entering and Exiting Programming Mode.

Use the bar code label below to enter and exit (“switch” into and out of) Programming Mode.



SWITCH LABEL

This completes the Scanner/Scale Programming Sequence.